



Instanta

InstaTap

Under-Counter, Push-Button Dispensers for the office
Boiling Chilled I2BC520, all models

Installation in a 600mm wide cupboard

This document is an instruction supplement. Please refer to all safety and installation requirements detailed in the installation instruction provided with the InstaTap system prior to installation of, or any change to, the complete system. **Damage caused by incorrect installation and may be excluded from warranty coverage.**



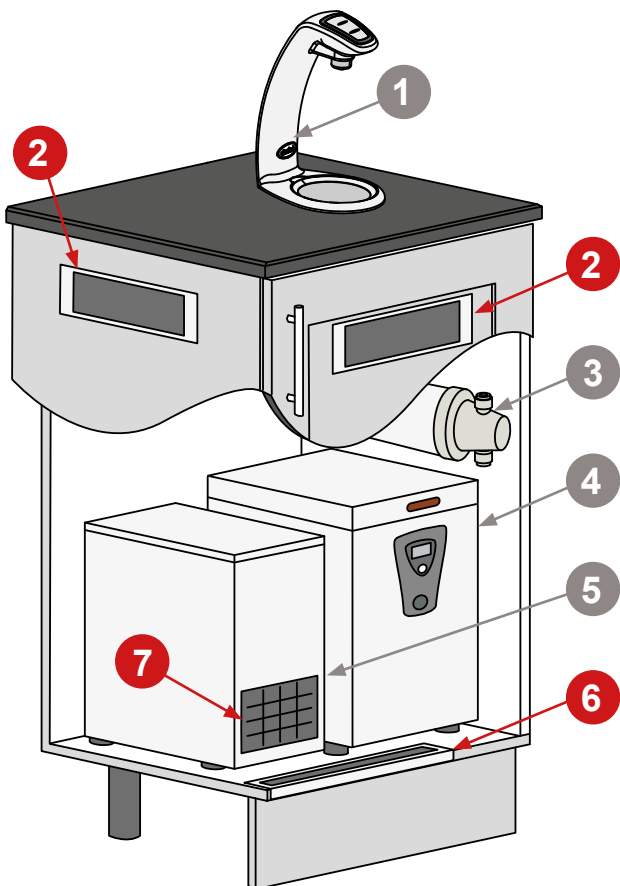
WARNING



Read the instructions

Before commencing the installation, download & read the InstaTap appliance installation instructions available at our website www.instanta.com
Read and use the instructions supplied with individual kit components for a safe installation.

Installation configuration



- | | |
|---|---|
| 1 Tap & Font | 4 Under counter boiler |
| 2 Air outlet vent (MUST be fitted) | 5 Under counter chiller |
| 3 Water filter | 6 Air inlet vent (MUST be fitted) |
| | 7 Front facing chiller condenser (Cover MUST be removed) |

Installation Instructions

- In 600mm wide cupboards, it will be difficult to fit the under counter appliances inside the cupboard and also observe the 65mm clearance envelope either side of the appliances, required by the installation instructions.
- Space to install the filter will also be limited.
- This situation is not optimal, but it is still possible to install the system safely, by observing the following instructions:
- Place the Tap directly above the boiler.
- Space out the appliance as much as possible, so the air gaps between and around them are the same.
- Mount the filter horizontally above the appliances.
- **Ensure that the air inlet vent supplied is placed on the cupboard floor in front of the under counter chiller.**
- **Ensure that the air outlet vent supplied is fitted at the top of the cupboard, in the door or cupboard side.**
- **Ensure that the under counter chiller condenser vent is at the front of the cupboard. The condenser cover MUST be removed.**
- Ensure that 4mm door buffers are fitted to aid ventilation.
- Plumb the front to waste in an adjacent cupboard.
- See next page for configuration layout.



After installation, monitor the cupboard temperature during periods of high usage, if the in cupboard air temperature rises above 30°C call us on 0345 6 005 005 for further options.

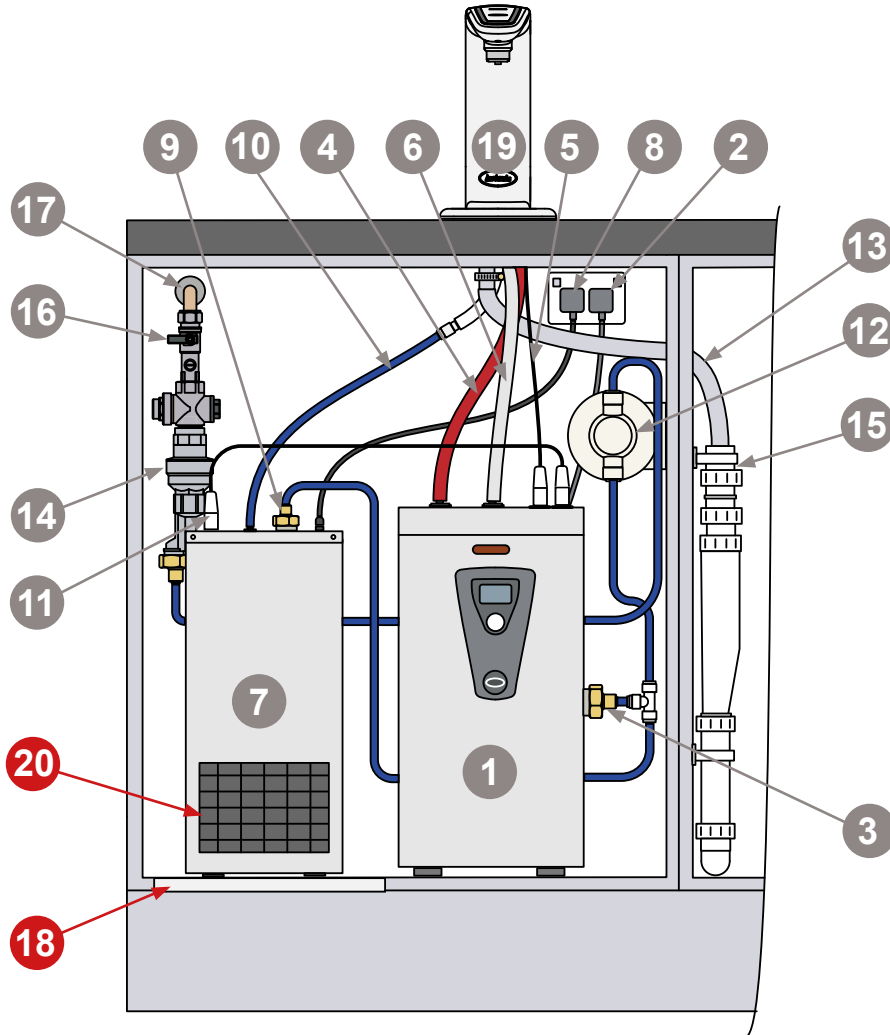
Installation layout



Install pipes & tubes correctly. No kinks, sags, pinches or loops. Ensure there is a constant fall from the tap down to the appliance.

I2BC520 (all models) in 600mm wide cupboard configuration layout

- Install the tap as close to the boiler as possible, use the illustration below as a guide, and follow the installation steps in the installation instructions supplied with the appliances.



- | | | |
|--------------------------------|--|--|
| 1 Under counter boiler (UCB) | 8 UCC Mains electricity supply | 14 Water block |
| 2 UCB Mains electricity supply | 9 UCC mains water connection | 15 Waste to drain |
| 3 UCB mains water connection | 10 UCC Chilled water 3/8" pipe
Connected to silicone tube | 16 Isolation valve (install rail inc.
non return valve) |
| 4 UCB Boiling water tube | 11 UCB - UCC control cable | 17 Mains water supply |
| 5 UCB control cable | 12 Filter head & water filter | 18 Air inlet vent
(MUST be fitted) |
| 6 UCB overflow & vent tube | 13 Font waste pipe | 19 Tap & Font |
| 7 Under counter chiller (UCC) | | 20 Chiller condenser
(Cover MUST be removed) |